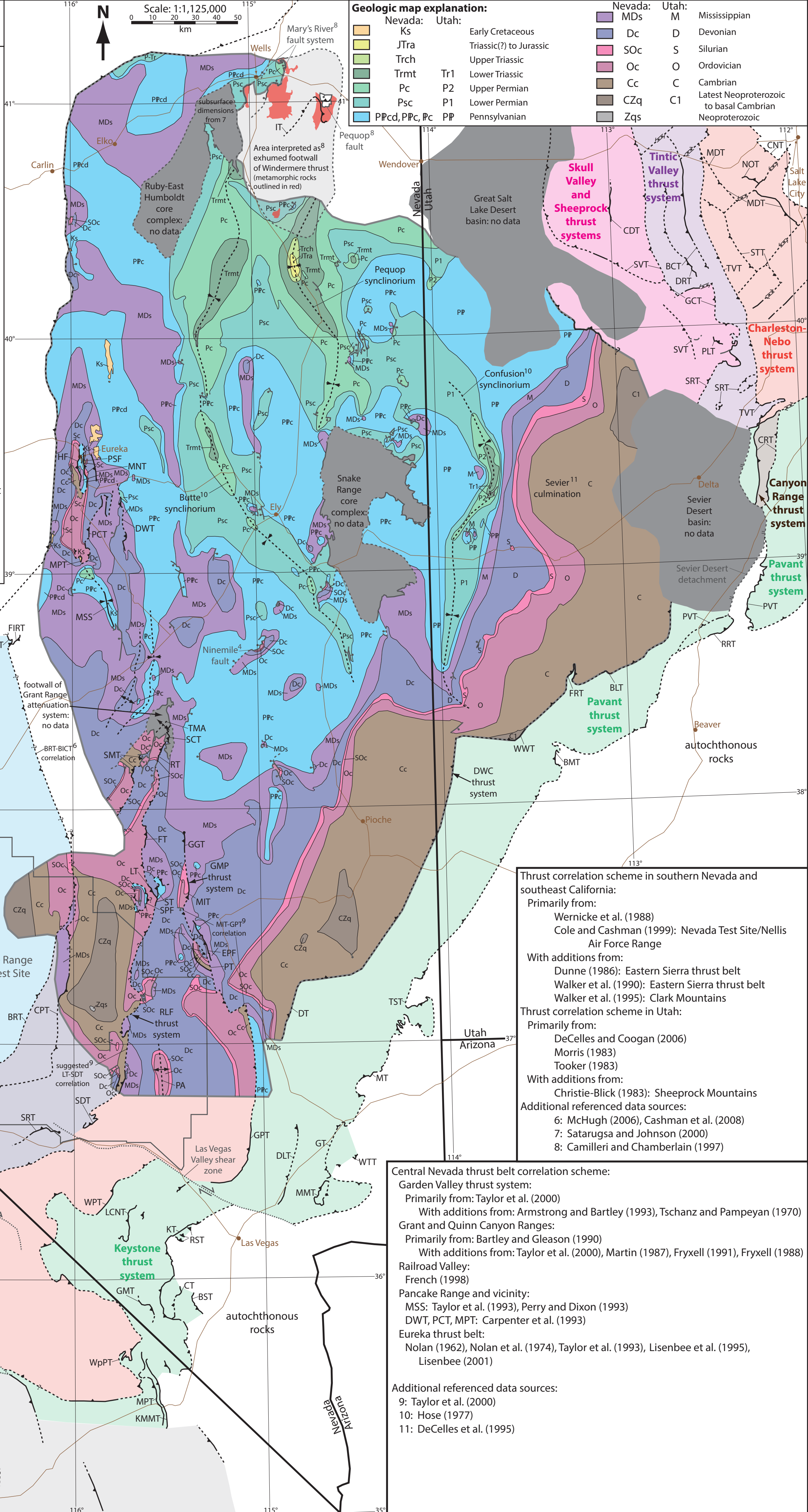


Plate 2: Paleogene subcrop map of the Sevier hinterland

- Contractional Structures**
- Wells area:**
IT: Independence thrust
- Central Nevada thrust belt:**
Eureka area to Pancake Range:
HF: Hoosac fault
PSF: Pinto Summit fault
MNT: Mortiz-Nager thrust
MPT: Moody Peak thrust
DWT: Duckwater thrust
PCT: Pancake thrust
MSS: McClure Spring syncline
Grant/Quinn Canyon Ranges:
TMA: Timber Mountain anticline
SCT: Schofield Canyon thrust
RT: Rimrock thrust
SMT: Sawmill thrust
Garden Valley thrust system:
FT: Freiberg thrust
LT: Lincoln thrust
SPF: Schofield Pass fault
ST: Schofield thrust
GGT: Golden Gate thrust
MIT: Mount Irish thrust
PT: Pahrangat thrust
EPF: East Pahrangat fault
- Sevier fold-thrust belt:**
Nevada Test Site/Nellis Range:
BRT: Belted Range thrust
MJT: Meikeljohn thrust
PNT: Panama thrust
CPT: CP thrust
SRT: Specter Range thrust
SDT: Spotted Range thrust
PA: Pintwater anticline
North of Nellis Range:
BICT: Big Cow thrust
FIRT: Fishhook Ridge thrust
East of Nellis range:
GPT: Gass Peak thrust
DT: Delamar thrust
DLT: Dry Lake thrust
MMT: Muddy Mountains thrust
GT: Glendale thrust
WTT: Willow Tank thrust
MT: Mormon thrust
TST: Tule Spring thrust
South of Las Vegas Valley:
WPT: Wheeler Pass thrust
LCNT: Lee Canyon thrust
GMT: Green Monster thrust
KT: Keystone thrust
CT: Contact thrust
RST: Red Spring thrust
BST: Bird Spring thrust

- Sevier fold-thrust belt, continued:**
Southeast California:
WpPT: Winters Pass-Pachalka thrust
MPT: Mesquite Pass thrust
KMMT: Keaney/Mollusk Mine thrust
LCT: Last Chance thrust
GRT: Grapevine thrust
MCT: Marble Canyon thrust
LMT: Lemoigne thrust
SPT: Schaub peak thrust
CLT: Clery thrust
BVT: Butte Valley thrust
Southern and central Utah:
CRT: Canyon Range thrust
WWT: Wah Wah thrust
FRT: Frisco thrust
BLT: Beaver Lake Mountains thrust
Northern Utah:
CNT: Charleston-Nebo thrust
NOT: North Oquirrh thrust
MDT: Midas thrust
STT: Stockton thrust
TVT: Tintic Valley thrust
BCT: Broad Canyon thrust
DRT: Delle Ranch-East thrust
CDT: Cedar thrust
SVT: Skull Valley thrust
GCT: Government Canyon thrust
PLT: Pole Canyon thrust
SRT: Sheeprock thrust



Geologic map explanation:

Nevada:	Utah:	Early Cretaceous
Ks	JTra	Triassic(?) to Jurassic
Trch	Tr1	Upper Triassic
Trmt	P2	Lower Triassic
Pc	P1	Upper Permian
Psc	P1	Lower Permian
PPcd, Ppc, Pc	PP	Pennsylvanian

Nevada:	Utah:	Mississippian
MDs	M	Devonian
Dc	D	Silurian
SOc	S	Ordovician
Oc	O	Cambrian
Cc	C	Latest Neoproterozoic to basal Cambrian
CZq	C1	Neoproterozoic
Zqs		

Thrust correlation scheme in southern Nevada and southeast California:
Primarily from:
Wernicke et al. (1988)
Cole and Cashman (1999): Nevada Test Site/Nellis Air Force Range
With additions from:
Dunne (1986): Eastern Sierra thrust belt
Walker et al. (1990): Eastern Sierra thrust belt
Walker et al. (1995): Clark Mountains
Thrust correlation scheme in Utah:
Primarily from:
DeCelles and Coogan (2006)
Morris (1983)
Tooker (1983)
With additions from:
Christie-Blick (1983): Sheeprock Mountains
Additional referenced data sources:
6: McHugh (2006), Cashman et al. (2008)
7: Satarugsa and Johnson (2000)
8: Camilleri and Chamberlain (1997)

Central Nevada thrust belt correlation scheme:
Garden Valley thrust system:
Primarily from: Taylor et al. (2000)
With additions from: Armstrong and Bartley (1993), Tschanz and Pampeyan (1970)
Grant and Quinn Canyon Ranges:
Primarily from: Bartley and Gleason (1990)
With additions from: Taylor et al. (2000), Martin (1987), Fryxell (1991), Fryxell (1988)
Railroad Valley:
French (1998)
Pancake Range and vicinity:
MSS: Taylor et al. (1993), Perry and Dixon (1993)
DWT, PCT, MPT: Carpenter et al. (1993)
Eureka thrust belt:
Nolan (1962), Nolan et al. (1974), Taylor et al. (1993), Lisenbee et al. (1995), Lisenbee (2001)
Additional referenced data sources:
9: Taylor et al. (2000)
10: Hose (1977)
11: DeCelles et al. (1995)